

Kizashi



Way of Life!

EXCITEMENT



KIZASHI LTD/IAWD SPORT



KIZASHI GLX

WHAT DOES KIZASHI® HAVE IN COMMON WITH AN AERODYNAMICALLY DESIGNED FORMULA 1™ RACECAR?



IT HAS A SLEEK UNDERFLOOR AIR MANAGEMENT SYSTEM THAT REDUCES COEFFICIENT DRAG BY NINE PERCENT AND THE STOPPING ABILITY OF KIZASHI'S POWERFUL AKEBONO® BRAKES!

FRONT RUNNER



HONED ON THE



ROADS OF EUROPE AND THE

U.S., KIZASHI MASTERED THE

JARRING CURVES OF NÜRBURGRING,

THE FLAT-OUT SPEEDS OF

THE AUTOBAHN AND THE

CHALLENGING DIVERSITY

OF AMERICAN HIGHWAYS

TO ENSURE TOP

PERFORMANCE ON

WHATEVER ROAD

YOU CHOOSE

TO TAKE.



PERFECTLY SUITED TO NEW ZEALAND

ROADS, KIZASHI COMBINES TRUE

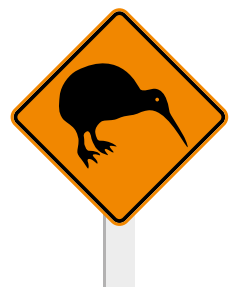
SPORTS CAR HANDLING

AND PERFORMANCE,

WITH SUPERB

STYLE AND

ELEGANCE.





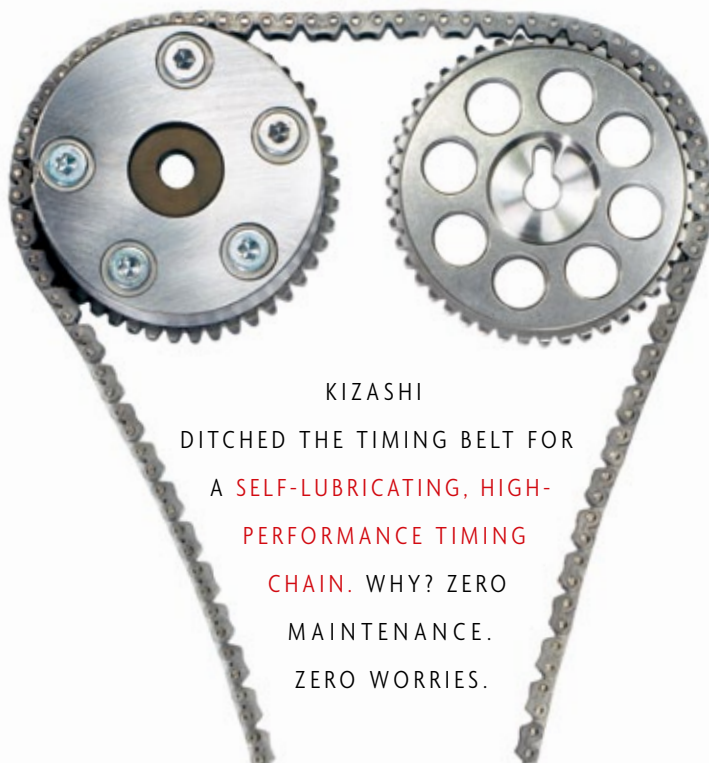
LIKE THE
LEGENDARY
HAYABUSA HYPER-
SPORTSBIKE, UNSURPASSED
IN PERFORMANCE, EVERY FIBRE
OF KIZASHI IS INFUSED WITH SUZUKI'S
**TIME-HONOURED, BOLD DNA FOR ENGINEERING
SUPREMACY** — A NEW CHALLENGER DESTINED TO
UPHOLD AN ENVIABLE TRADITION OF PERFORMANCE.



TO THE SUN-BAKED DESERTS,



AROUND-THE-WORLD DURABILITY TESTING FROM THE FRIGID ARCTIC



KIZASHI
DITCHED THE TIMING BELT FOR
A **SELF-LUBRICATING, HIGH-
PERFORMANCE TIMING
CHAIN**. WHY? ZERO
MAINTENANCE.
ZERO WORRIES.



HIGH MARKS

With over 50 years
of experience
creating world-class
machines that are
high on performance
and style, Suzuki
Kizashi is engineered
to perfection
and tested in
the extreme.

NO CLIMATE WAS LEFT UNCONQUERED.

ADVANCED **VARIABLE INDUCTION SYSTEM (VIS)**

FOR MORE USABLE TORQUE AT A WIDE RANGE OF SPEEDS

7.9 L/100 KMS CERTIFIED ADRI ECONOMY
FOR KIZASHI 2WD MODELS

POWER OUTPUT **131 kW** AND **230 Nm**
FOR EFFORTLESS PERFORMANCE

FORGED CRANKSHAFT
AND STEEL-LINED CYLINDERS



IT'S A YIN-YANG. KIZASHI'S IMPRESSIVE POWER AND PERFORMANCE ARE
MATCHED BY THE EQUALLY COMMANDING **AKEBONO® BRAKE COMPONENTS** — THE SAME
BRAND THAT BRINGS JAPAN'S SCREAMING BULLET TRAINS TO A SAFE AND CONTROLLED STOP.



**TORSIONAL HIGH-
RIGIDITY UNIBODY
STRUCTURE** HELPS
ENSURE A SUPERIOR
BLEND OF SPORTY
HANDLING, QUIETNESS
AND RIDE COMFORT
THAT LEAVES OTHER
PERFORMANCE SEDANS
IN THE DUST.



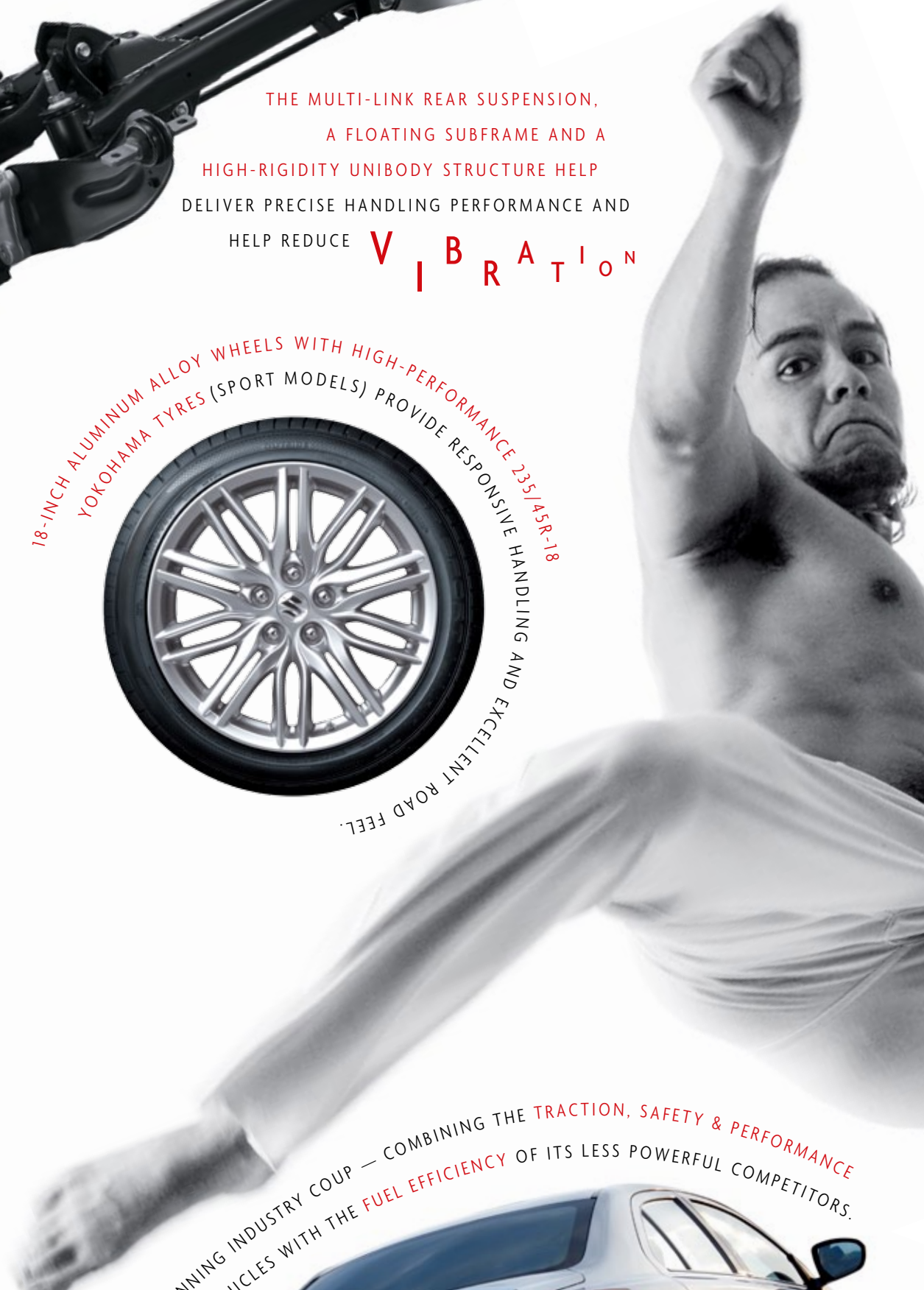
P O T E N T



THE MULTI-LINK REAR SUSPENSION,
A FLOATING SUBFRAME AND A
HIGH-RIGIDITY UNIBODY STRUCTURE HELP
DELIVER PRECISE HANDLING PERFORMANCE AND
HELP REDUCE

VIBRATION

18-INCH ALUMINUM ALLOY WHEELS WITH HIGH-PERFORMANCE 235/45R-18
YOKOHAMA TYRES (SPORT MODELS) PROVIDE RESPONSIVE HANDLING AND EXCELLENT ROAD FEEL.



KIZASHI CARRIES OFF A STUNNING INDUSTRY COUP — COMBINING THE TRACTION, SAFETY & PERFORMANCE
OF EXPENSIVE LUXURY VEHICLES WITH THE FUEL EFFICIENCY OF ITS LESS POWERFUL COMPETITORS.



POWER

ACCOLADES

“Handily beats the
dynamics of almost
everything else
in its price and/or
size class.”

- automobilemag.com

Automobile

The Kizashi does
excel in handling and
driving dynamics...
on the Niagara Drive
Centre’s purpose-
designed closed
circuit, the Kizashi
was clearly the top
performer.

- CanadianDriver

CanadianDriver





Average fuel economy
7.9



Control buttons on the left side of the steering wheel:

- MODE
- VOL +
- VOL -
- Up arrow
- Down arrow

Control buttons on the right side of the steering wheel:

- CRUISE
- CANCEL
- RES +
- SET -

Control buttons on the bottom left of the steering wheel:

- Phone icon
- Navigation icon
- Media icon

Control buttons on the bottom right of the steering wheel:

- DISP
- TRIP



BLACK LEATHER INTERIOR



LUXURY



USB AUDIO STREAMING



iPOD® COMPATIBLE CONNECTION



BLUETOOTH® HANDS-FREE CALLING



TOUCH-SCREEN SAT NAV (ALL SPORT MODELS)



SAFETY REVERSING CAMERA (ALL SPORT MODELS)

7-SPEAKER AUDIO SYSTEM



SMARTPASS™
KEYLESS PUSH-
BUTTON IGNITION
WITH REMOTE
ENTRY MEANS
YOUR KEYS
NEVER HAVE TO
LEAVE YOUR
POCKET.



USE THE PASS-
THROUGH OPENING
FOR STOWING SKIS.
FOR MORE SPACE,
ONE OF THE FOUR
60:40 SPLIT
REAR SEATBACK
CONFIGURATIONS
IS SURE TO
ACCOMMODATE.



CYLINDRICALLY SHAPED, BACKLIT GAUGES FORM KIZASHI'S MAIN INSTRUMENTATION — ONE OF MANY DESIGN ELEMENTS INSPIRED BY LEGENDARY SPORTS CARS.

“WHAT'S IMPRESSIVE HERE IS THE HIGH-QUALITY FEEL OF THE INTERIOR — THE MATERIALS USED ON THE DASHBOARD AND DOOR PANELS ARE FIRST-RATE, AND ITS OVERALL LOOK CERTAINLY CLIMBS A FEW RUNGS ON THE LADDER OF SOPHISTICATION.”

- roadandtrack.com

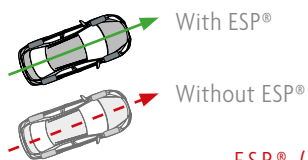


TOUCH OF CLASS

Kizashi marks a clear departure from traditional sedans with optimised sound reduction insulation and structure, high-quality finishes and materials, felt-lined glove compartment, door courtesy and front footwell lights.

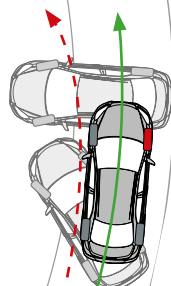
THE EXPERT TOUCH OF A LEADING ERGONOMIC SPECIALIST IS EVIDENT IN THE **STANDARD SPORT SEATS** WITH 10-WAY POWER DRIVER'S SEAT AND 3-POSITION MEMORY (LTD & iAWD SPORT). THE GENEROUS DIMENSIONS AND SPECIAL DENSITY FOAM HELP MINIMISE DRIVER FATIGUE. CHOOSE HIGH-QUALITY LEATHER OR DELUXE DENSELY WOVEN FABRIC, EACH FINISHED WITH FRENCH SEAM DETAILING.





ESP® (ELECTRONIC STABILITY PROGRAMME)

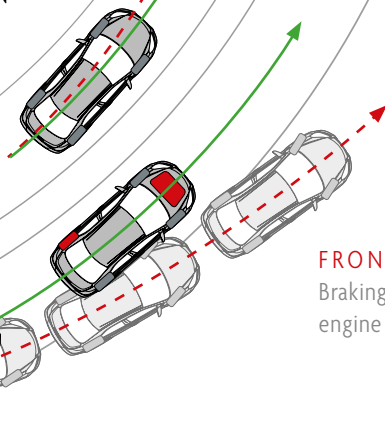
COMBINES ANTI-LOCK BRAKING WITH ELECTRONIC BRAKE FORCE DISTRIBUTION, TRACTION CONTROL AND STABILITY CONTROL. SENSORS DETERMINE AND HOLD THE INTENDED CORNERING LINE, GREATLY IMPROVING TRACTION AND STABILITY WHILE REDUCING FRONT AND REAR WHEEL SLIP.



REAR-WHEEL SLIP
Braking force applied

5-YEAR/100,000-KILOMETRE WARRANTY

PACKAGE AND 5-YEAR
24-HOUR ROADSIDE
ASSISTANCE.



FRONT-WHEEL SLIP
Braking force applied and
engine torque reduced



YOUR SAFETY IS OUR TOP CONCERN. KIZASHI BOASTS **SEVEN AIRBAGS** AS STANDARD. WE'VE GOT YOU COVERED!

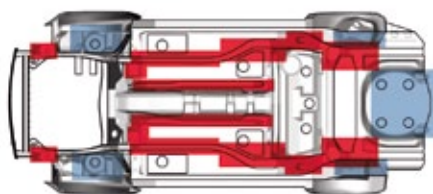


**FRONT AND REAR
SONAR PARKING ASSIST**
(LTD & iAWD SPORT)
MONITORS THE DISTANCE
BETWEEN YOU AND LARGE
OBJECTS, SOUNDING
AN ALERT IF YOU GET
TOO CLOSE!

PEACE OF MIND



SUZUKI'S PROPRIETARY **TOTAL EFFECTIVE CONTROL TECHNOLOGY (TECT™)** COCOONS PASSENGERS WITHIN A LIGHT, ENERGY-ABSORBING BODY COMBINED WITH A SUPER-STRONG, DEFORMATION-RESISTING CABIN STRUCTURE THAT ABSORBS AND DISPERSES IMPACT.



HIGHLY RUST-RESISTANT ZINC-ALLOY-PLATED STEEL MAKES UP 80 PERCENT OF THE BODY. ANTI-RUST WAX IS APPLIED TO THE INSIDE SURFACES AND SUSPENSION MOUNTINGS; **SEALANT COATS THE UNDERFLOOR MOUNTS AND WHEEL WELLS**; AND **RESIN PANELS HELP SHIELD THE SIDE SILLS AND UNDERBODY COMPONENTS FROM STONES, CORROSION AND GRIME.**



HID PROJECTOR BEAM HEADLAMPS THROW MORE LIGHT, MORE ACCURATELY THAN HALOGENS FOR ENHANCED SAFETY AND VISIBILITY IN ANY DRIVING ENVIRONMENT (LTD & iAWD SPORT).



5-STAR

SAFETY

The Australasian New Car Assessment Program (ANCAP) has awarded the 7-airbag Kizashi a maximum 5-star safety rating.



Kizashi is also compliant with the 2014 U.S.A. NHTSA requirements, embodying safety ahead of its time.





P E R F O R M A N C E



KIZASHI iAWD SPORT

KIZASHI SPORT



OVER 50 YEARS
OF INTENSE AWD DEVELOPMENT AND
APPLIED DURABILITY BY SUZUKI PAY OFF IN
**KIZASHI iAWD SPORT'S
STANDOUT INTELLIGENT
AWD SYSTEM.**

A SUZUKI STRENGTH, UTILISING A FAST-
ACTING ELECTRONIC CLUTCH COUPLING THAT
MONITORS THROTTLE INPUT AND STEERING
ANGLE TO ANTICIPATE SLIPPAGE AND
OPTIMISE POWER DISTRIBUTION
BEFORE YOU KNOW YOU NEED IT.

SUPERIOR CORNERING

Based on road conditions and steering wheel input, Kizashi iAWD Sport's system senses the turn and optimises the torque distribution to the rear wheels for smooth, controlled cornering.

FEEDFORWARD CONTROL

This key iAWD system feature adjusts the distribution of engine power going to the rear wheels in accordance with road conditions and driving style for maximum iAWD performance and minimal fuel consumption.



KIZASHI iAWD SPORT ADDS AN **INTELLIGENT AWD SYSTEM** TO ENHANCE ITS **TRACTION, SAFETY AND PERFORMANCE** – GIVING IT A DISTINCT EDGE OVER ITS LESS WELL-EQUIPPED FWD COMPETITORS IN ALL CONDITIONS.





KIZASHI SPORT'S FRONT END IS DYNAMIC WITH A GREATER EMPHASIS ON THE MESH GRILLE AND DEEP SET DRIVING LIGHT BEZELS. INSIDE, **SILVER STITCHED LEATHER** AND A SPORT-STYLE STEERING WHEEL ON THE iAWD ADD TO THE FEELING OF HIGH PERFORMANCE LUXURY THAT IS PERFECTLY IN LINE WITH KIZASHI'S **IMPRESSIVE PERFORMANCE CREDENTIALS.**

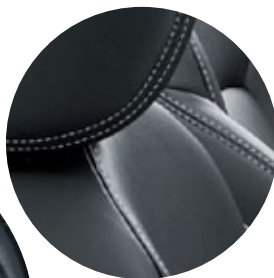
AWD

OPTIMISED

Befitting a high-end sports sedan, Kizashi's new iAWD system serves up top-performance and handling advantages in every weather and traction condition, while maximising fuel economy.



A STYLISH TAILGATE SPOILER, **18 INCH PERFORMANCE ALLOY WHEELS**, A DISCREET AWD BADGE ON THE BOOT LID ADD TO THE EXTERIOR STYLE. DRIVING KIZASHI iAWD SPORT IS ALL ABOUT **BEING IN TOTAL CONTROL.**





	GLX	GLX SPORT	LTD SPORT	iAWD SPORT
ENGINE AND DRIVETRAIN				
2.4-litre DOHC 4-cylinder engine with 131 kW and 230 Nm of torque	●	●	●	●
Front-Wheel Drive	●	●	●	—
Advanced intelligent All Wheel Drive (iAWD)	—	—	—	●
6-speed manual transmission	●	—	—	—
Performance-tuned Continuously Variable automatic Transmission (CVT)	●	●	●	●
Steering-wheel mounted paddle shifters (CVT)	—	—	●	●
High-output dual exhaust system with integrated rear outlets	●	●	●	●
Zero-maintenance timing chain	●	●	●	●
WHEELS AND BRAKES				
18-inch alloy wheels with 235/45R18 Yokohama dB Decibel E70	—	●	●	●
17-inch alloy wheels with 215/55R17 Yokohama dB Decibel E70	●	—	—	—
Full size spare alloy wheel	●	●	●	●
4-wheel disc brakes with Akebono® components	●	●	●	●
Sport-tuned, fully independent suspension with KYB® performance-tuned shock/strut	●	●	●	●
EXTERIOR				
Power assisted glass sunroof with tilt function and 1-touch control	—	—	●	●
HID (High Intensity Discharge) headlamps with auto levelling	—	—	●	●
Auto light sensing headlamps	—	—	●	●
Headlight washers	—	—	●	●
Front foglamps	—	●	●	●
Rain-sensing automatic wipers	—	—	●	●
Variable intermittent wipers	●	●	●	●
Heated side mirrors	—	—	●	●
Sport front bumper, lower grille, fog lamp chrome accents, side-sill covers and chrome door garnishes	—	●	●	●
Boot-lid spoiler	—	●	●	●
INTERIOR				
SmartPass™ keyless push-button ignition and entry	●	●	●	●
Dual-zone automatic climate control with pollen filter and rear vents	●	●	●	●
Sport seats with ergonomic design	●	●	●	●
Leather-appointed interior	—	—	●	● ⁵
Leather-wrapped steering wheel	●	●	●	●
Sports leather-wrapped steering wheel and shift knob	—	—	—	●
Audio system controls integrated with steering wheel	●	●	●	●
Cruise control integrated with steering wheel	●	●	●	●
10-way power driver's seat adjustment with 3-position memory (includes power lumbar)	—	—	●	●
4-way power passenger's seat	—	—	●	●
Heated front seats (3 temperature settings)	—	—	●	●
7-speaker AM/FM/CD audio system	●	●	●	●
Garmin touch-screen satellite navigation and infotainment system with SD card playing	—	●	●	●
Bluetooth® wireless streaming audio and hands-free mobile phone connection	●	●	●	●
USB audio input (MP3 or iPod® music players)	●	●	●	●
Tilt and telescopic steering wheel adjustment	●	●	●	●
Seatbelt reminder – driver and passenger	●	●	●	●
Automatic day/night rear view mirror	—	—	●	●
Information display with outside temperature, fuel consumption (instant or average), range, average speed	●	●	●	●
Power windows (front auto up/down) and door locks	●	●	●	●
Sport gauges featuring backlit instrumentation	●	●	●	●
Interior lighting group (LED ambiance lights, glove compartment, door courtesy & front footwell)	●	●	●	●
Overhead console with sunglasses holder	●	●	●	●
Centre console storage and armrest storage compartment with power outlet	●	●	●	●

⁵ With silver stitching. ¹ Australian Design Rules (national standards for vehicle safety, anti-theft and emissions). ESP® is a registered trademark of Daimler AG. Formula 1™ is a trademark of Formula One Licensing BV, a Formula One Group Company. Yokohama tyres are the product of Yokohama Rubber Co. Ltd, Japan. Akebono® is a registered trademark of Akebono Brake Corporation. KYB® is a registered trademark of KYB Co. Ltd.



GLX GLX SPORT LTD SPORT iAWD SPORT

SAFETY

Electronic Stability Program (ESP®)	●	●	●	●
Bosch® Anti-lock Braking System (ABS) with Electronic Brake-Force Distribution (EBD)	●	●	●	●
Electronic Brake Assist (EBA)	●	●	●	●
Dual front advanced airbags — Supplemental Restraint System (SRS)	●	●	●	●
Side-impact airbags — one in each front seat	●	●	●	●
Side-curtain airbags covering front and rear	●	●	●	●
Driver's knee airbag	●	●	●	●
Reversing camera	—	●	●	●
Front and rear sonar parking assist (4 front / 4 rear)	—	—	●	●
Engine immobiliser and alarm	●	●	●	●
3-point front and rear seatbelts with front height adjustment and pretensioners	●	●	●	●
Rear child-seat tether anchors (x3) and rear child-seat ISOFIX anchors (x2)	●	●	●	●
Side-impact door beams	●	●	●	●

CARGO

60/40 split-folding locking rear seats	●	●	●	●
Rear centre armrest with pass-through	●	●	●	●
Trunk cargo restraint hooks	●	●	●	●
3-way electromagnetic boot release	●	●	●	●

INTERIOR DIMENSIONS

Head room, front/rear	(mm)	998 / 940
Leg room, front/rear	(mm)	1,060 / 904
Shoulder room, front/rear	(mm)	1,410 / 1,387

EXTERIOR DIMENSIONS

Wheelbase	(mm)	2,700
Overall length	(mm)	4,650
Overall width	(mm)	1,820
Overall height	(mm)	1,480
Curb weight	manual / CVT (kg)	1,445 / 1,485
Turning radius	(m)	5.5

CAPACITIES

Seating (passengers)	5
Luggage capacity (VDA) rear seatback up	(L) 461
Fuel	91RON (L) 63
Towing	Braked (kg) 1,700
	Unbraked (kg) 720

PERFORMANCE

Maximum speed	manual / CVT (km/h)	215 / 205
0–100 kms/hr	manual / CVT (seconds)	7.8 / 8.8

FUEL EFFICIENCY

Fuel consumption (combined) ADR ¹	(L/100 kms)	7.9	7.9	7.9	8.4
CO2 emissions	manual / CVT (g/km)	186 / 187	187	187	198



Snow White Pearl (ZMT)



Premium Silver Metallic (ZNC)



Mineral Gray Metallic (ZMW)



Super Black Pearl (ZMV)



Fervent Red (ZNB)



Black Fabric



Black Leather
(Silver stitched in iAWD Sport)

Kizashi GLX



Kizashi GLX Sport



Kizashi LTD / iAWD SPORT



REASSURANCE





5
YEAR 100,000 km
**WARRANTY
PACKAGE**

5
YEAR Unlimited km
**ROADSIDE
ASSIST**



Way of Life!

SUZUKI NEW ZEALAND LIMITED 1 HEADS ROAD, WANGANUI, NEW ZEALAND. WWW.SUZUKI.CO.NZ

Standard and optional equipment available may vary from time to time. Some international models illustrated – please enquire at your Suzuki dealer for exact specifications. Suzuki New Zealand Ltd reserves the right to change, without notice, prices, colours, materials, equipment, specifications and models, and also to discontinue models. Fuel consumption information is provided for comparative purposes only. Your fuel consumption will vary due to factors such as vehicle condition, driving style and traffic conditions. SZA0005 Nov 2013.

