

9B

Headlight Unit Removal and Installation

WARNING:

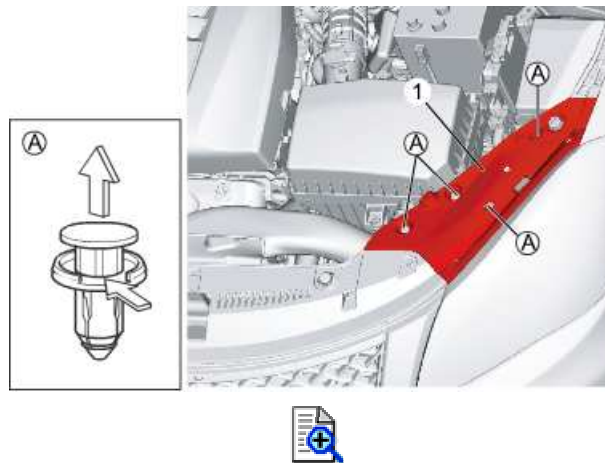
Headlight bulbs may be extremely hot. There is risk of burn if you touch them carelessly.

CAUTION:

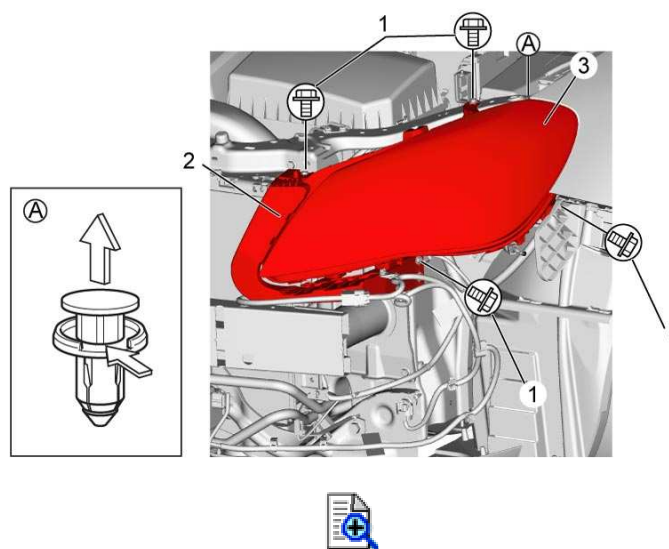
Do not touch glass surface of bulb with bare hands. Bulb surface with dirt deteriorates and becomes unclear when bulb lights up.

Removal

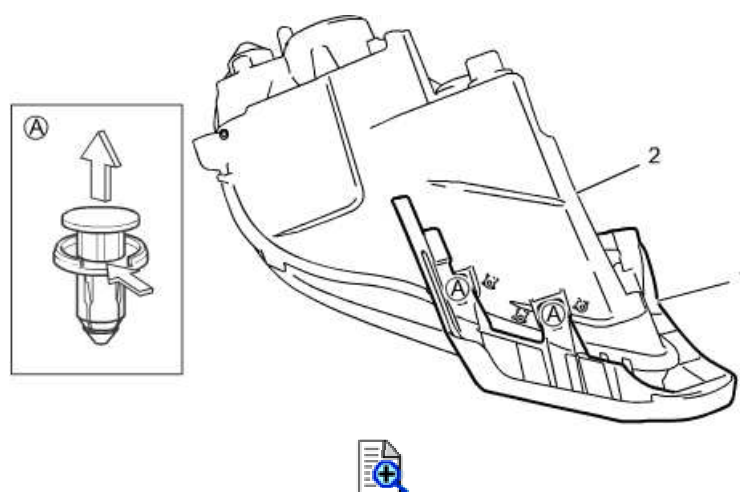
- 1) Disconnect negative (-) cable at battery.
- 2) Remove headlight cover (1).



- 3) Remove front bumper.
- 4) Disconnect headlight unit connectors.
- 5) Remove headlight unit bolt (1) and clip.
- 6) Remove headlight holder (2) and headlight unit (3).



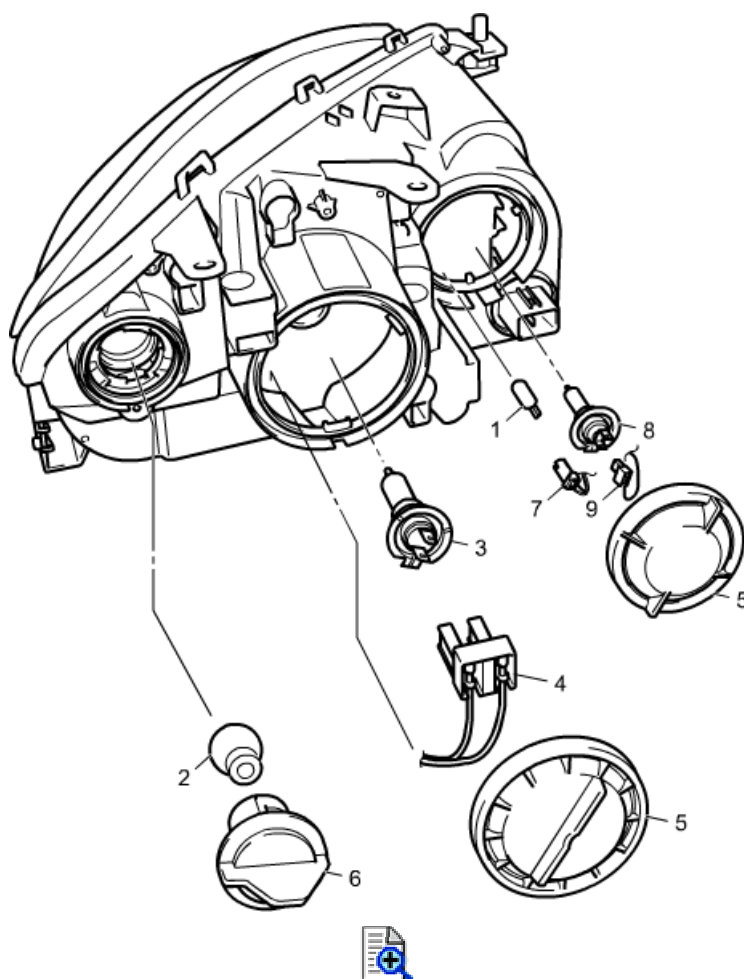
- 7) Remove clips and remove headlight holder (1) from headlight unit (2).



8) Remove bulbs, if necessary.

NOTE:

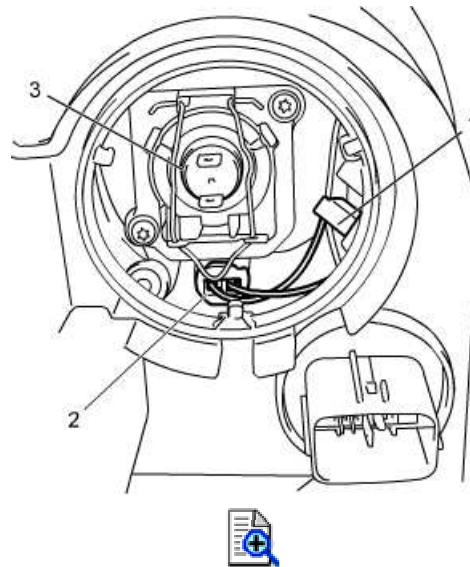
Bulbs in headlight unit except bulb for left low-beam light can be replaced from rear side with headlight unit installed.



1. Clearance light bulb	6. Turn signal light bulb socket
2. Turn signal light bulb	7. Clearance light bulb socket


3. Headlight bulb (LO)	8. Headlight bulb (HI)
4. Headlight bulb connector (LO)	9. Headlight bulb connector (HI)
5. Back cover	

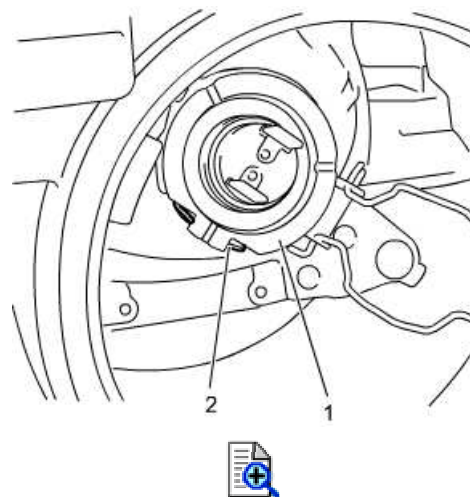
- 9)** Turn back cover counterclockwise to remove.
- 10)** Disconnect headlight bulb connector (HI) (1).
- 11)** Pull out clearance bulb socket (2) and remove clearance bulb.
- 12)** Release bulb spring and remove headlight bulb (HI) (3).



Installation

Reverse removal procedure, noting the following points.

- Aim headlights after installing. 
- Align headlight bulb (LO) (1) with claw (2).



Headlight Aiming and Light Intensity Check

NOTE:

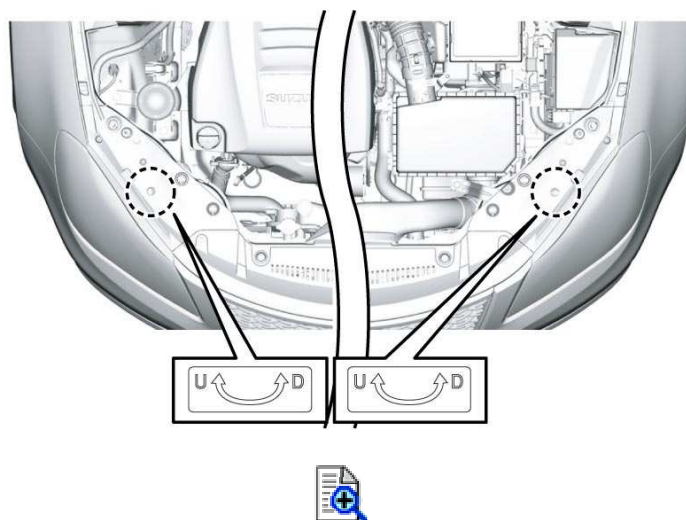
- Unless otherwise required by local regulations, perform headlight aiming using either of the procedures described below.
- After any of the following services, be sure to aim headlights.
 - Headlight unit replacement
 - Headlight unit removal and installation

Preparation

- 1) Adjust air pressure of all tires to specified value.
- 2) Remove any load from vehicle.
- 3) Have one person of 68 kg (150 lb) sit on driver seat.
- 4) Start engine to fully charge battery.

Aiming Adjustment Screws

Use aiming adjustment screws as shown in figure.

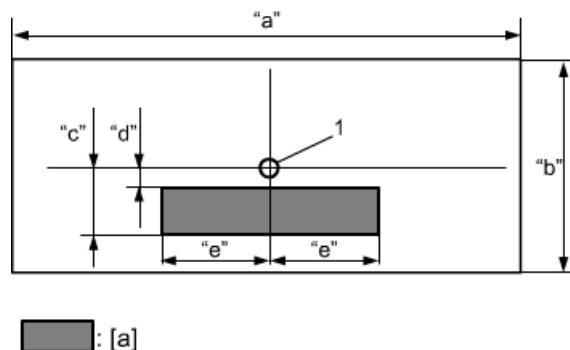


Procedure Using Tester

Follow tester manufacturer's instructions.

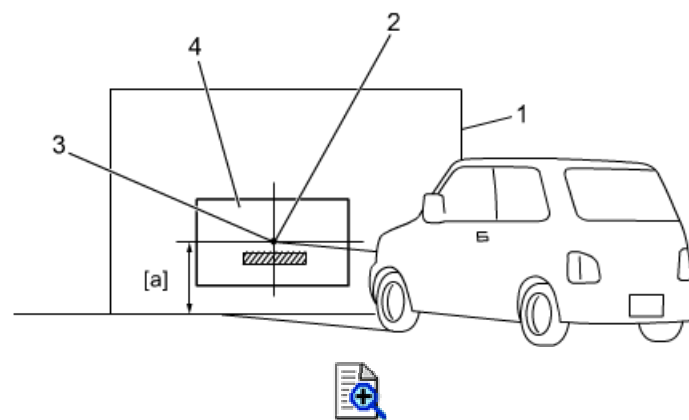
Procedure Using Adjustment Screen

- 1) Prepare aiming screen as shown in figure.



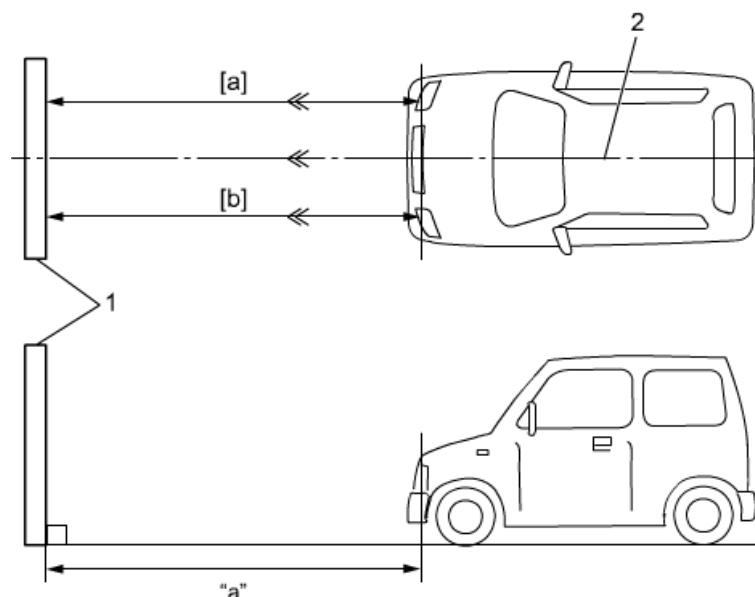
"a": Elbow point adjustment range	"d": 20 mm (0.8 in.)
"a": About 420 mm (16.5 in.)	"e": 270 mm (10.6 in.)
"b": About 350 mm (13.8 in.)	1. Light center (Make a \varnothing 10 mm (\varnothing 0.4 in.) hole.)
"c": 150 mm (5.91 in.)	

- 2) Park vehicle on a level floor with front facing vertical wall (1).
- 3) Put a mark (3) on wall at same height as headlight center position (2).
- 4) Align light center hole made in screen (4) with mark on wall and fix screen with its horizontal edges parallel with floor surface.



[a]: Headlight center height

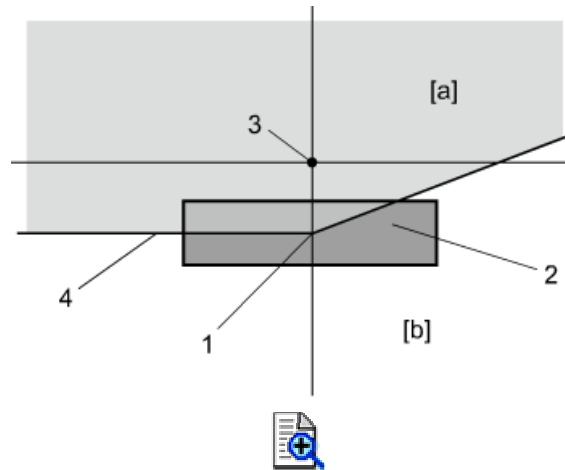
- 5) Locate vehicle 10 m (33 ft) away from screen (1) with its front directly against screen ([a]=[b]).





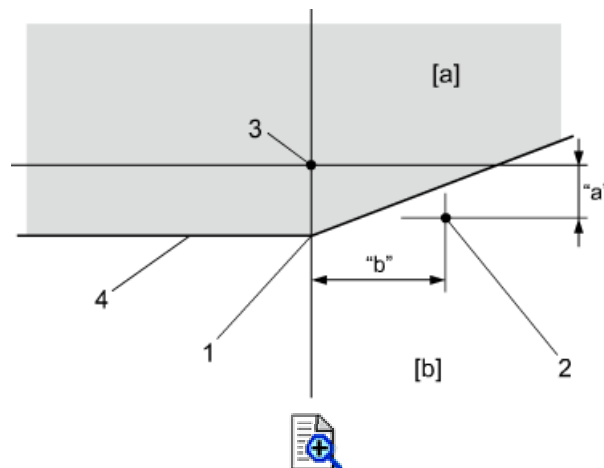
"a": 10 m (33 ft.)	2. Vehicle center
--------------------	-------------------

- 6) Block light from headlight not being adjusted by placing light shield in front of the light.
- 7) Turn on headlights (low beams).
- 8) Adjust aiming screw so that elbow point (1) of low beam on screen is within adjustment range (2) as shown in figure.



[a]: Dark portion	3. Headlight center
[b]: Bright portion	4. Bright / dark boundary

- 9) Check that light intensity measured on screen at a point 110 mm (4.33 in) below and 230 mm (9.05 in) to right of light center is at or higher than specified value.



[a]: Dark portion	1. Elbow point
[b]: Bright portion	2. Brightness measurement point

"a": 110 mm (4.33 in.)	3. Headlight center
"b": 230 mm (9.05 in.)	4. Bright / dark boundary
"c": 130 mm (5.12 in.)	

9A

D-1 Headlight System Circuit Diagram

